

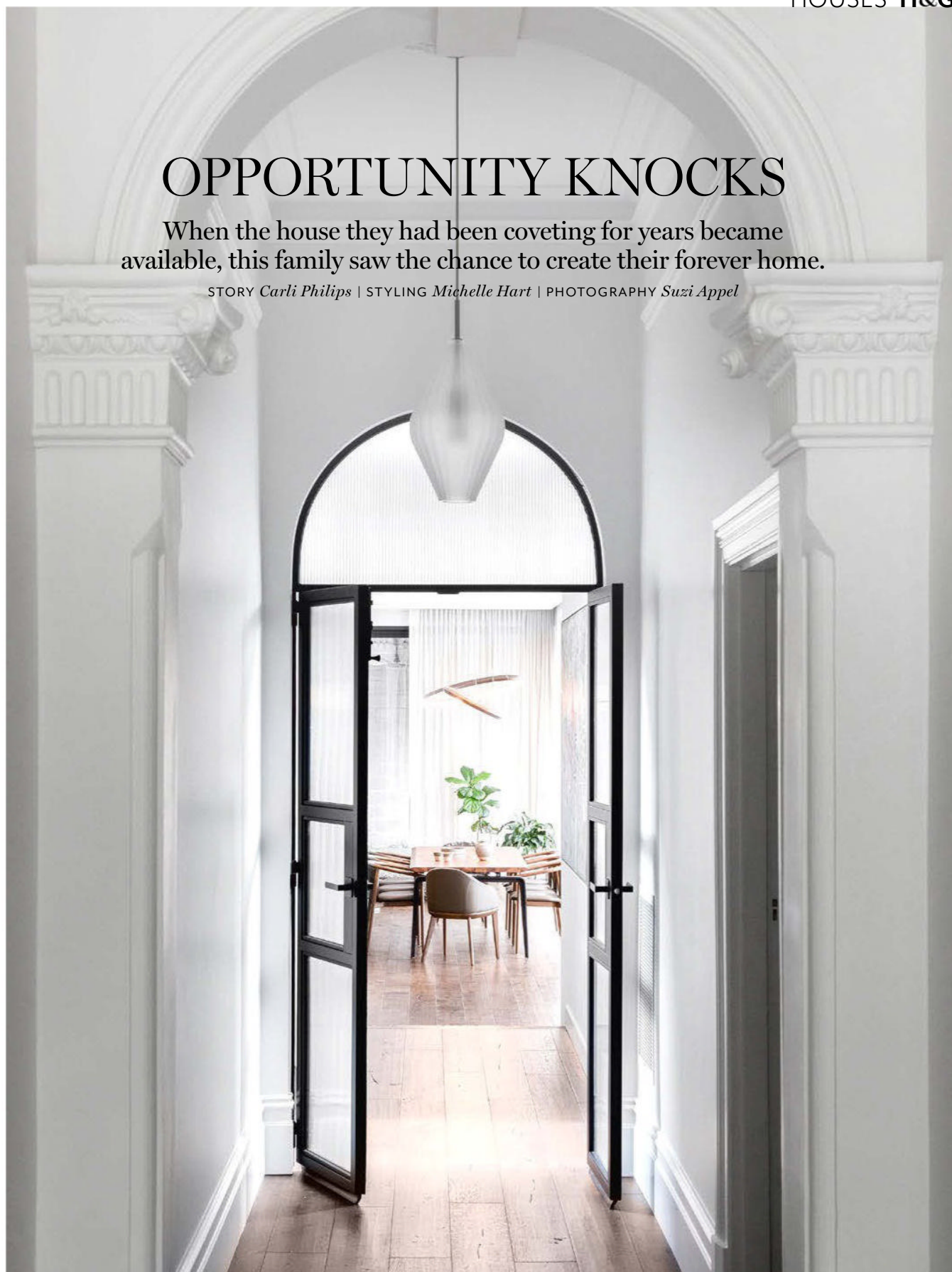



EXTERIOR The owners had their eye on the house for years and wanted to retain the period facade, including the aqua-coloured front door. **HALLWAY** *Opposite* Saint Marlo Reclaimed Oak flooring, Smarter Timber Flooring. Bailey pendant by Tom Fereday, Rakumba.

OPPORTUNITY KNOCKS

When the house they had been coveting for years became available, this family saw the chance to create their forever home.

STORY *Carli Philips* | STYLING *Michelle Hart* | PHOTOGRAPHY *Suzi Appel*



A photograph of a modern dining room. In the foreground, a long, rectangular wooden dining table is set with a ceramic teapot and two small cups. It is surrounded by chairs with dark leather upholstery and wooden frames. A large, circular, multi-layered pendant light hangs above the table. The room has light-colored walls, large windows with sheer curtains, and a dark wooden floor. In the background, a hallway leads to another room, and a dark wooden cabinet is visible on the right.

The owners of this inner-city Melbourne home needed two things when they engaged Frances Cosway, founder and design director of White Pebble Interiors: robust finishes and a house that could withstand their boisterous teenage boys.

The materials needed to be heavy-duty with nothing too sensitive or delicate. This resulted in carefully considered surfaces like tough Dekton engineered timber flooring and joinery that would be “dirty football-hands resistant” and ultra hardwearing. The homeowners delivered Frances a succinct brief: “A casual, welcoming family home with a modern industrial design edge. Quality and beauty but nothing too precious or showy.”

Having lived in the same street for years, the owners coveted this house for about two decades. In 2019, when they were finally in a position to buy it, they knew it would be their forever home. Although it was fundamentally their dream home, it was in desperate need of renovation. It was cosmetically dated with a lean-to extension, and work needed to be done on expanding the footprint and adopting new fixtures, finishes and furniture. The front door, which was aqua when they purchased it, remained unchanged in a nod to its heritage identity.

The envelope of all four rooms at the front of the house was kept intact, but with modifications. In the guest bedroom and sitting room on one side of the passageway, the period fireplaces were retained. In the sitting ▶

DINING & KITCHEN Oracle twin pendant light, Christopher Boots. Alessandro Bini 'Johanna' armchairs and Justin Hutchinson for Kett 'Otway' armchairs, all in Ultimo Oliva leather, all Cosh Living. Ligne Roset 'Odessa' dining table, Domo. Clay pieces (on table) by Katherine Mahoney, Forman Art & Framing. Spring artwork by Amanda Brooks, Blue Thumb. Island is Dekton Industrial Collection in Lunar, Cosentino. Customised 'Iva' stool, Grazia & Co. Pippa Ash ceramic tile splashback, Perini Tiles. Navurban joinery in Ravenswood, New Age Veneers. Cooker in Anthracite, Smeg. Billi tap (rear) and Sussex 'Scala' tap, both Reece. Vase, littala.



room, a new opening was made with leadlight glass. “If we had left it as plain glazing it would have looked out of place,” says Frances. “You would never know the leadlight was new. It just felt right for the historical part of the home.”

On the opposite side of the corridor, two rooms were joined to become one main bedroom, with an ensuite and walk-in wardrobe. With feature wallpaper in teal, “it’s like a boudoir and the home’s most luxurious space”.

The hallway was stretched past the existing structure with a powder room and mudroom on the right. Designated cupboards for each child were created as a locker-style place to hang uniforms, store school bags and shoes, place books on shelves and charge devices using a docking station. There’s also a drawer for dog paraphernalia and bench seating where all the boys’ sport shoes are stored. Because the mudroom can be accessed directly from the outdoors, Frances says, “The thinking was that everyone could go directly into the home via the side door and then pack all their things away in their allocated places.”

To the left of the central corridor is a laundry under the stairs. “The laundry had to work super hard and be very functional,” says Frances. “We had to design around having four washing baskets – one each for light clothing, darks, sportswear and handwashing.”

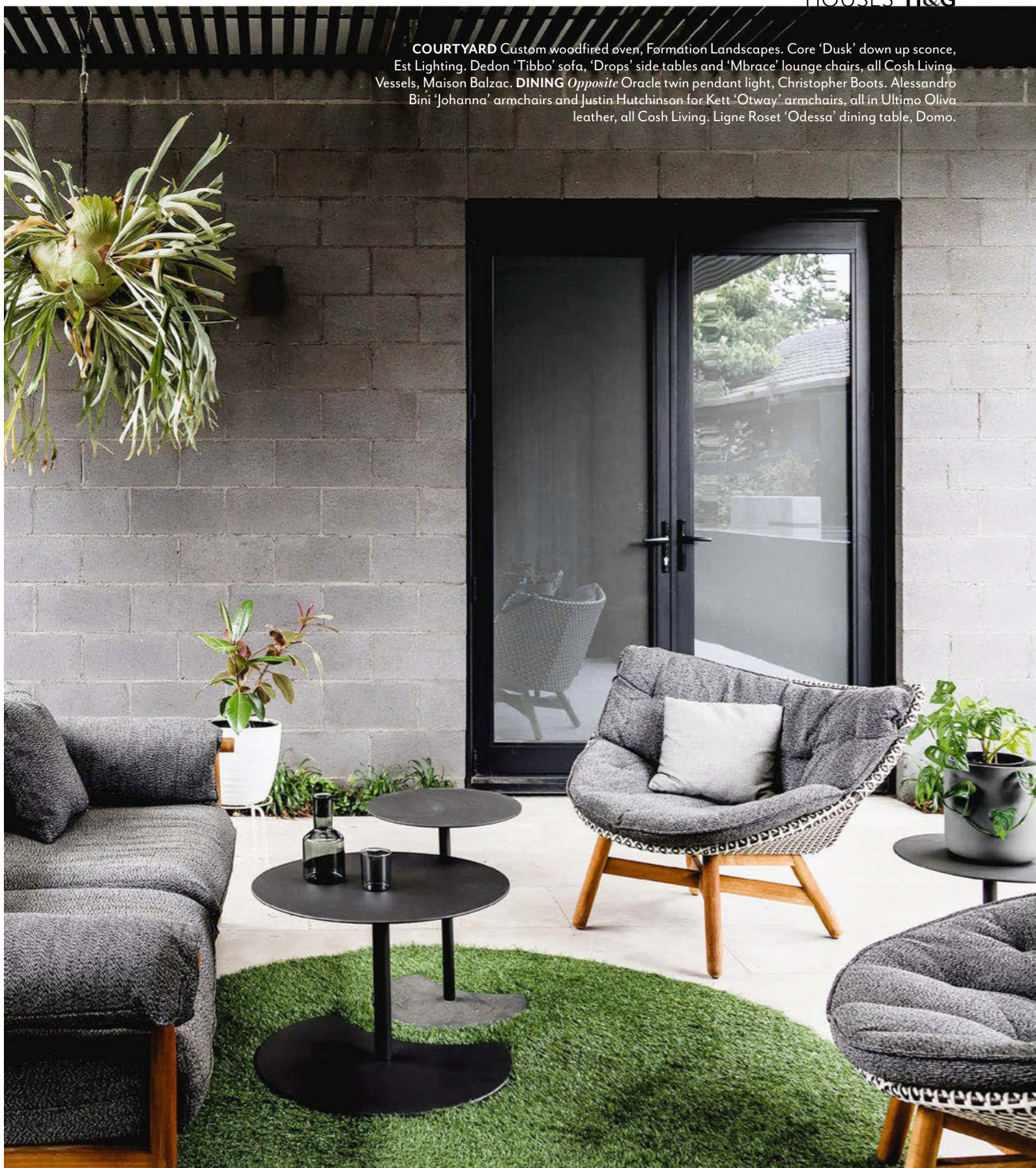
Beyond the hallway everything was demolished; the new extension is marked clearly via a set of steel- ▶




THIS IS THE LIFE

“The modern, open-plan, light-filled kitchen is beautiful and functional with a wonderful connection to the outside, especially the gorgeous pool,” says the homeowner. “It’s great to have local friends come by for a meal or a swim. I love the front sitting room, which reflects the original period of the house with its fireplace, cosy seating and custom leadlight.”

COURTYARD Custom woodfired oven, Formation Landscapes. Core 'Dusk' down up scone, Est Lighting. Dedon 'Tibbo' sofa, 'Drops' side tables and 'Mbrace' lounge chairs, all Cosh Living. **DINING** *Opposite* Oracle twin pendant light, Christopher Boots. Alessandro Vessels, Maison Balzac. *Bini* 'Johanna' armchairs and Justin Hutchinson for Kett 'Otway' armchairs, all in Ultimo Oliva leather, all Cosh Living. Ligne Roset 'Odessa' dining table, Domo.



LIVING Ligne Roset 'Prado' sofa, Domo. Pot plants, West Elm. Agra rug in Kingfisher, Armadillo. Cabinetry in Satin Royal Oyster, Albedor Industries. Solid timber top in Spotted Gum. Vessels by Nadia Robertson, Forman Art & Framing. Kanta nested cocktail tables, Boyd Blue. Vase by Simone Karras. Vessel (large), Frey. Vessel (small), Bridget Bodenham.

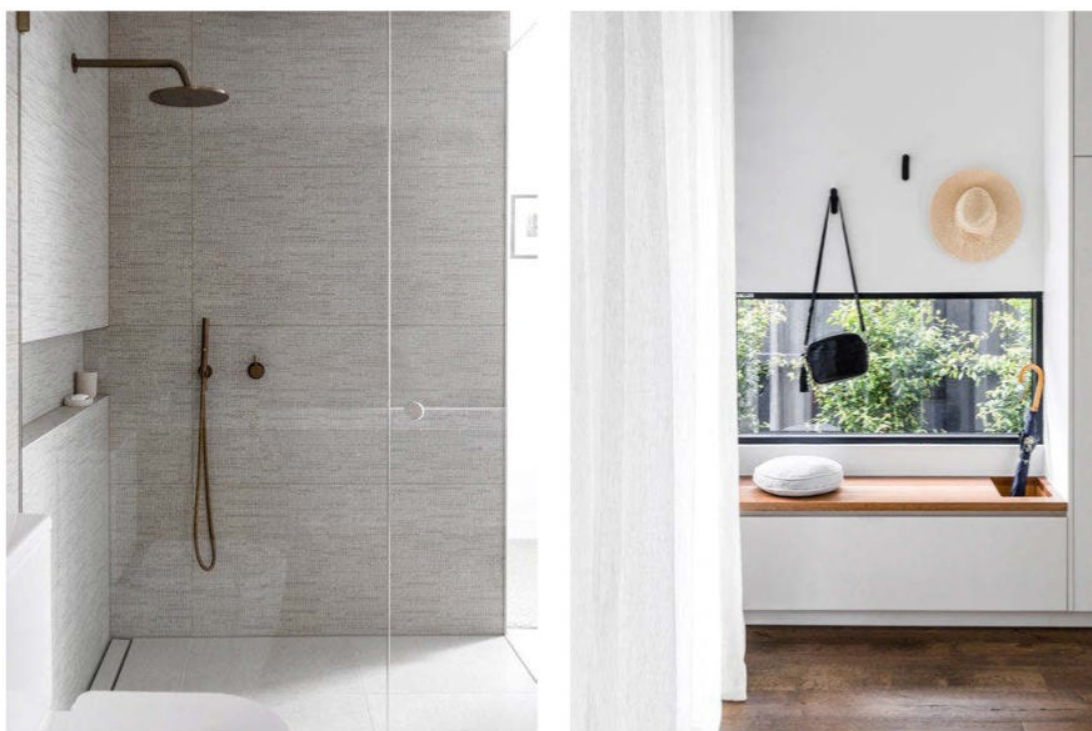
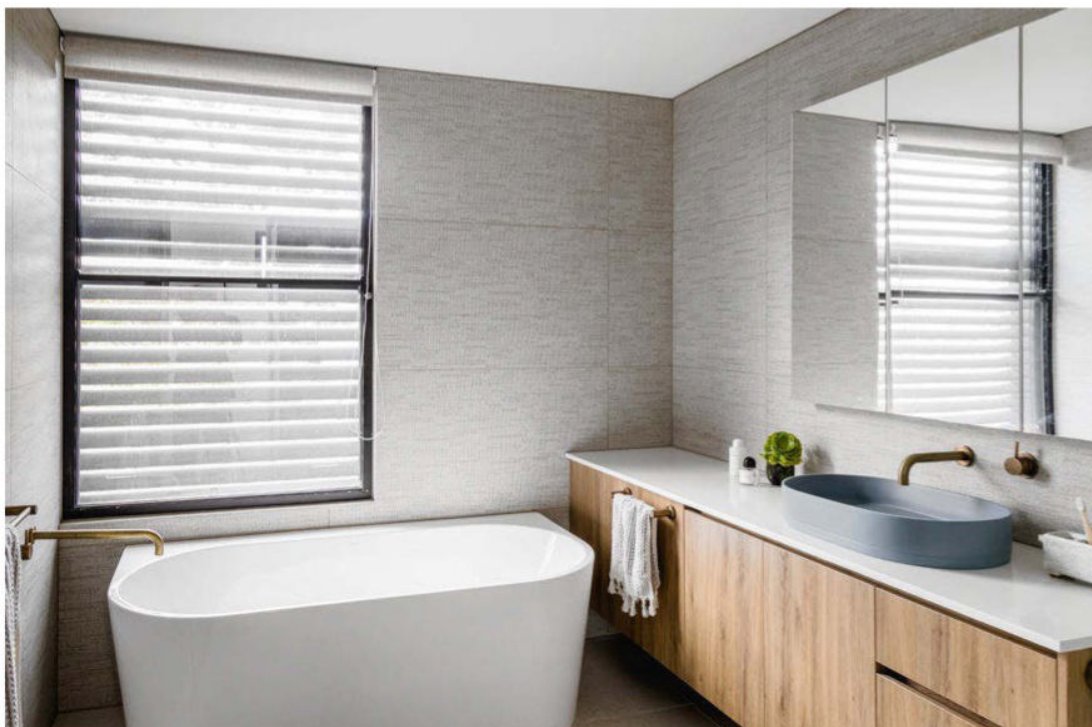


framed glass doors. As the kitchen and living room share the same wall, Frances delineated the two zones with a shelving unit in spotted gum. "We didn't want the living room to feel like it was in the kitchen, so we designed the bookshelves and specified them in another material to create a clear distinction between the two spaces," she says. Given the area isn't overly generous, Frances chose a sofa with weighted, non-slip back cushions that can be removed easily and don't need to rest against anything for support. The sofa is backless so it doesn't cut off the space and can be oriented any which way.

Dedicated solely to the boys, the second storey has two bedrooms, a retreat and shared bathroom in neutral colours. "Purposefully, this means they have a space just for them, as nobody else needs to go up there for anything. The whole floor is their designated space," says Frances.

Thrilled with their new home, the owners credit Frances for delivering the perfect combination of beauty and practicality. "White Pebble Interiors brought in so much texture and colour while incorporating hard-wearing finishes," they say. And the proof is in the pudding: "It's standing up to life with teenagers."

White Pebble Interiors, Hampton, Victoria;
0401 194 095 or whitepebbleinteriors.com.au. *Backman Builders, Melbourne, Victoria;* backmanbuilders.com.au. *Formation Landscapes, Box Hill South, Victoria;* (03) 9044 7910 or formationlandscapes.com.au.



BATHROOM *Top and bottom left* Digital Ecru wall tile, Urban Edge Ceramics. Urbane II bath, Caroma. Sussex 'Scala' tapware in Living Rustic Bronze, Reece. Tivoli Ivory porcelain floor tiles, Elegance Moorabbin Tiles. Silestone Yukon benchtop, Cosentino. Chalet Oak Tabac laminate cabinetry, Duropal. Pill basin in Copan Blue, Nood Co. **MUDROOM** *Bottom right* Cabinetry formed in Satin Royal Oyster by Albedor Industries, with solid timber Spotted Gum benchtop. **MAIN BEDROOM** *Opposite* Noctis Pyxis wallpaper, Unique Fabrics. Kis wall sconce, Rakumba. Custom-made bedhead designed by White Pebble Interiors. Curtains in Lizzo Bahamas fabric, Ian Frood. ►

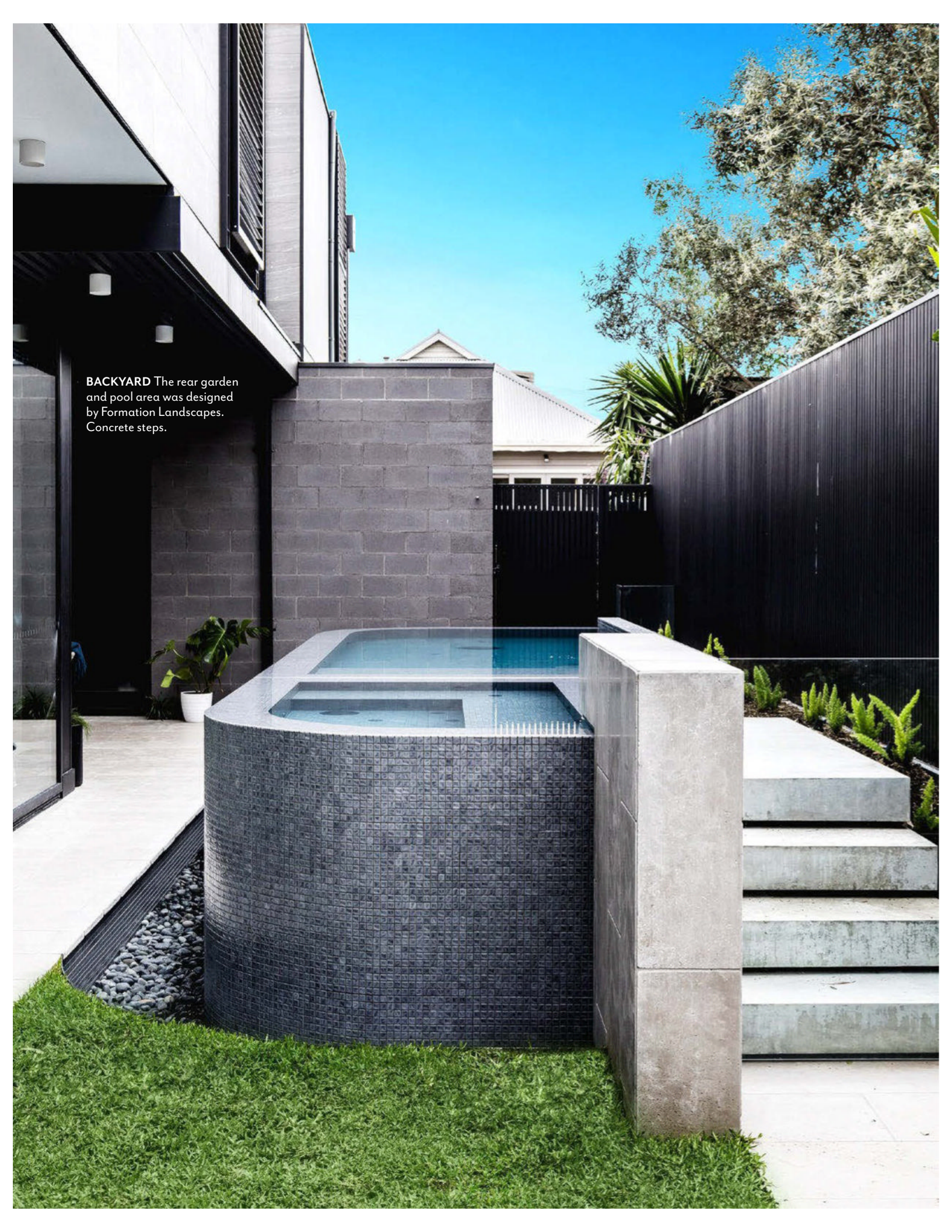
THE PALETTE

Dulux Whisper White
(walls throughout)

Dulux Dolphin Daze

Dulux Bengal Blue

Paint colours are reproduced as accurately as printing processes allow.

A modern backyard featuring a rectangular pool with a curved, dark mosaic tile base. The pool is surrounded by a dark stone wall and a concrete deck. To the right, there are concrete steps leading up to a higher level. The background shows a clear blue sky and some trees.

BACKYARD The rear garden and pool area was designed by Formation Landscapes. Concrete steps.



1

THE SOURCE

Create a welcoming family home that has a contemporary industrial design edge with these hardworking pieces.



2

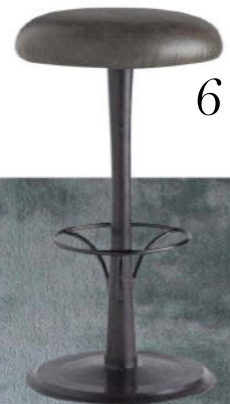


3

4



5



6

7



8



9

10



11

1 Twin Oracle **pendant light** in Brass, POA, Christopher Boots. 2 B&B Italia 'Husk' swivel **armchair** with snug side in Aramis Rope 207 fabric, from \$6825, Space. 3 Australian House & Garden 'Coachwood' fringed **cushion** in Off-White, \$60, Myer. 4 Natural Raku large **vessel** by Simone Karras, \$630, Jardan. 5 Visionary Living 'Sense' **floor rug** in Mint (240x340cm), \$899, Harvey Norman. 6 Arteriors 'Holden' **bar stool** in Graphite leather, \$4695, Boyd Blue. 7 Domestique Decor **French press** in Smokey Grey, \$130, Hardtofind. 8 Ribbed **bath towels** in Oat, from \$9 each, Città. 9 Elysian Minimal **mixer and spout set** in Brushed Brass, \$295, ABI Interiors. 10 Nood Co 'Pill' **basin** in Copan Blue, \$730, The Blue Space. 11 Any Day **dining table** in Canaletto Walnut by Flexform, \$18,695, Fanuli. *For Where to Buy, see page 192.* **H&G**